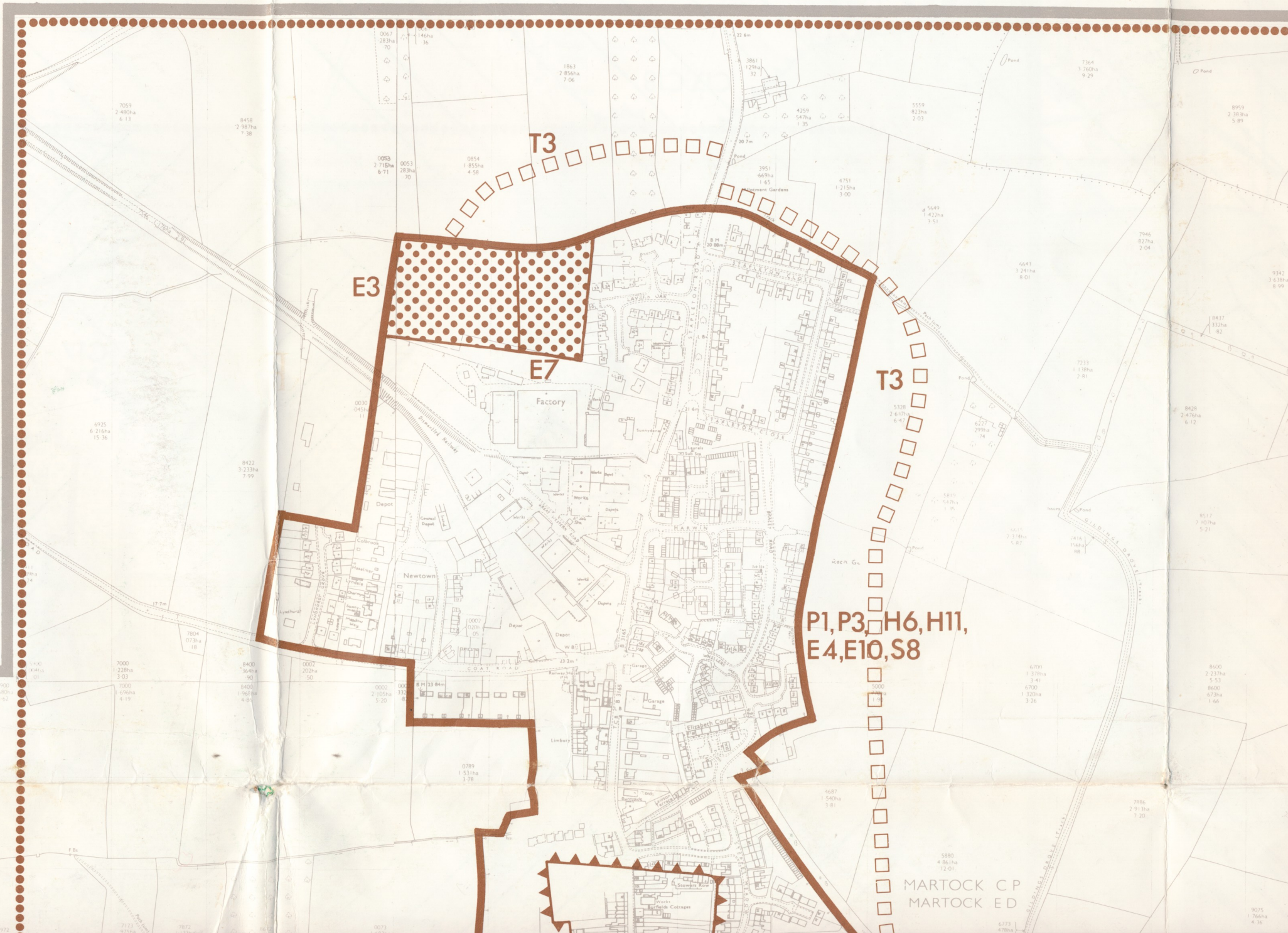


3:



E3

T3

E7

Factory

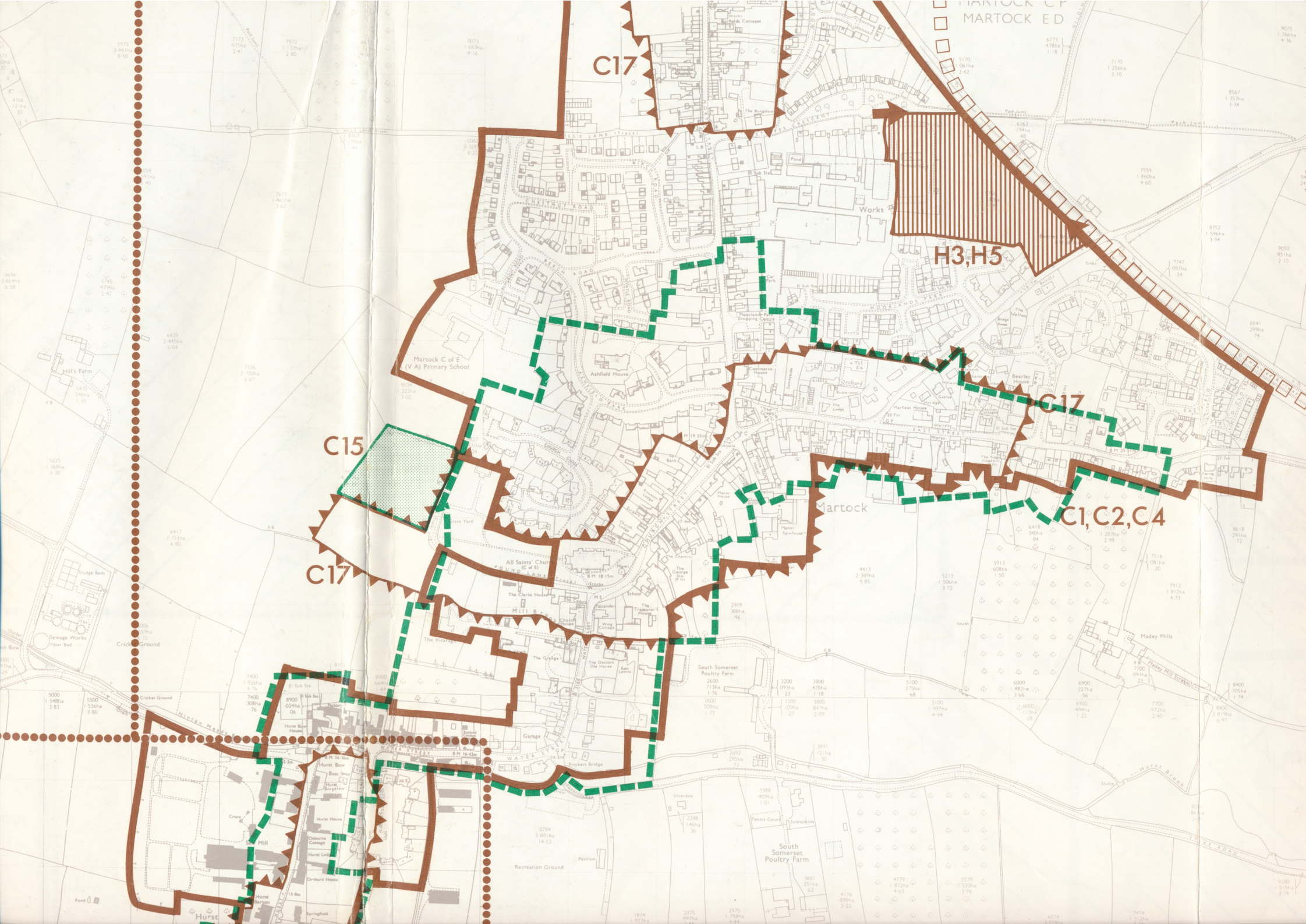
Newtown

Elizabeth Court

T3

P1, P3, H6, H11,
E4, E10, S8

MARTOCK C P
MARTOCK ED



MARTOCK ED

C17

H3, H5

C17

C15

C1, C2, C4

C17

Martock C of E
(V A) Primary School

Ashfield House

Martock

All Saints' Church
(C of E)

South Somerset
Poultry Farm

South Somerset
Poultry Farm

Water Mease

Cricket Ground

Cricket Ground

Cricket Ground

Cricket Ground

Cricket Ground

Cricket Ground

Hurst

Hurst

Hurst

Hurst

Hurst

Hurst

Hurst

Hurst

Hurst

Hurst

Hurst

Hurst

Hurst

Hurst

Hurst

Hurst

Hurst

Hurst

Hurst

Hurst

Hurst

Hurst

Hurst

Hurst

Hurst

Hurst

Hurst

Hurst

Hurst

Hurst

Hurst

Hurst

Hurst

Hurst

Hurst

Hurst

Hurst

Hurst

Hurst

Hurst

Hurst

Hurst

Hurst

Hurst

Hurst

Hurst

Hurst

Hurst

Hurst

Hurst

Hurst

Hurst

Hurst

Hurst

Hurst

Hurst

Hurst

Hurst

Hurst

Hurst

Hurst

Hurst

Hurst

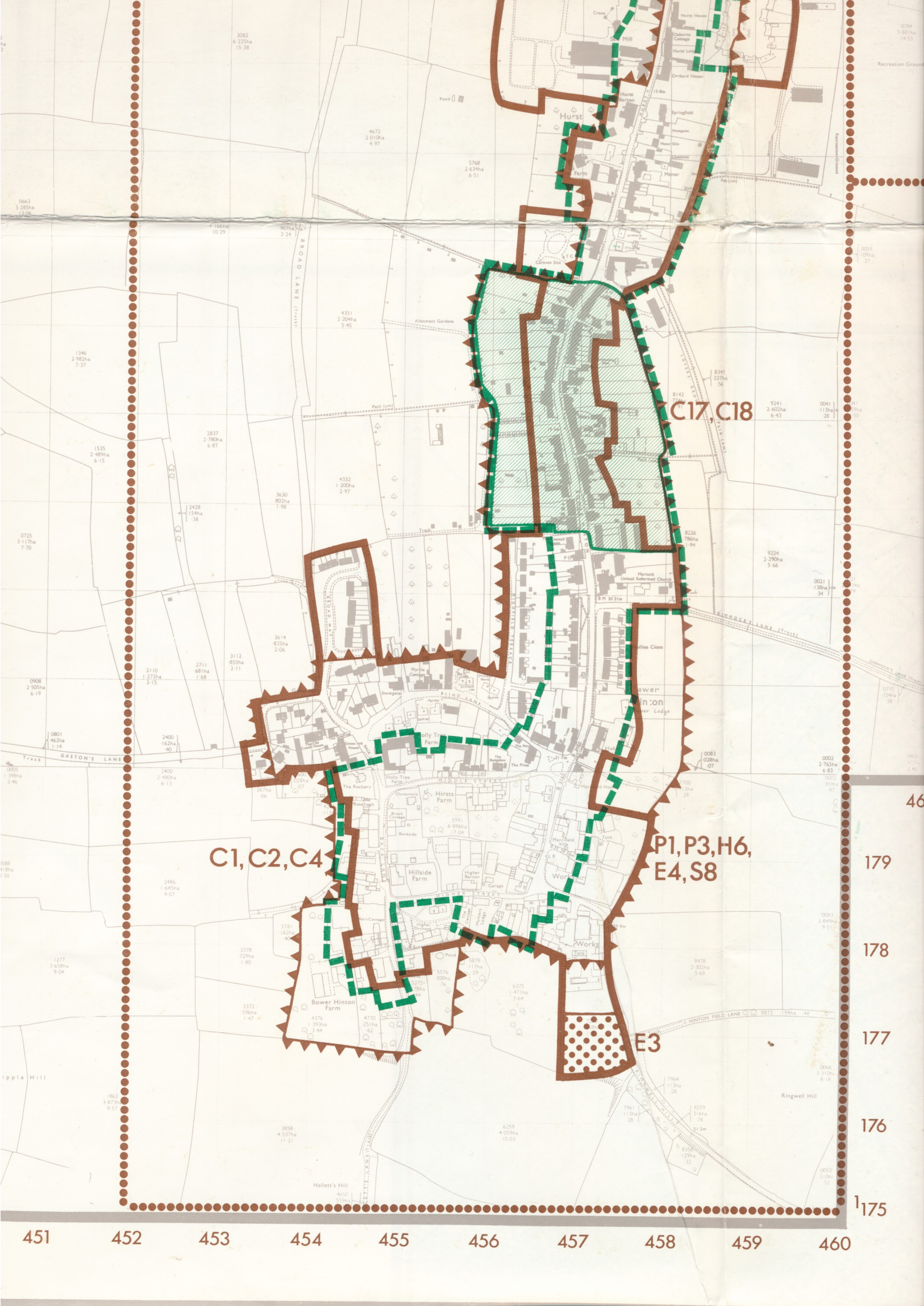
Hurst

Hurst

Hurst

Hurst

Hurst



C1, C2, C4

C17 C18

P1, P3, H6,
E4, S8

E3

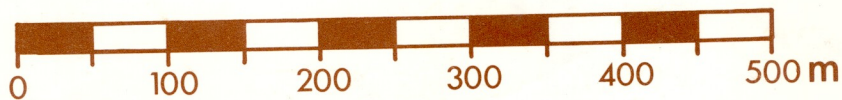
451 452 453 454 455 456 457 458 459 460

175
176
177
178
179
46

YEOVIL AREA LOCAL PLAN

INSET MAPS 5,10,13,20, 21 & 32.

SCALE: 1:5,000



SOUTH SOMERSET
DISTRICT COUNCIL

JANUARY 1989

Based upon the Ordnance Survey 1:2500
maps with the permission of the Controller
of Her Majesty's Stationery Office,
Crown Copyright Reserved.

BOUNDARIES

Inset Boundary



PROPOSALS

Housing

H3, H4, H5



Employment

E3, E5, E7



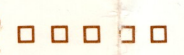
Road Improvement

T2



Footway

T2



Car Park

T10



Public Recreation

R6



Community Facility

F1, F2



POLICIES

Development Limit	P1, P3, H6, E4, E8, S8, R14	
Protected Road Line	T1, T3	
Conservation	C1, C2, C3, C4	
No Development	C5	
Buffer Zone	C6	
Special Landscape Area	C11	
Site of Ecological Value	C12	
Tree Planting	C13	
Landscape Improvement	C14	
Archaeological Protection	C15, C16	
Archaeological Observation / Recording	C17	
Historic Feature	C18	

Policy C7 Applies to the Area Including Inset Map 10.

Zone of Major Archaeological Importance C19, C20 - - -

Historic Parks/Gardens C22 

Management Plan R13 

Policies Which Apply to the Plan Area but Which are not Annotated on the Inset Maps.

Building Conversions	P2
Housing	H8, H9, H12
Employment	E10, E11, E12,
Transport	T13, T14, T15, T16
Conservation & Environment	C4, C7, C8, C9, C13, C16
Recreation	R1, R2, R10, R14, R16
Community Facilities	F3, F4, F5, F6, F7,

Reference numbers refer to policies and proposals in the written statement.

The precise boundary areas should be taken as the inside edge of boundary lines.